

BLINDING OF ELIMAS



STATE OF PRESERVATION

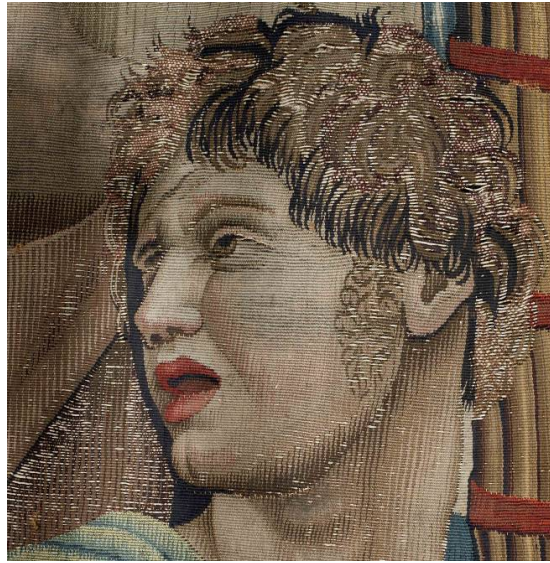
The tapestry is completely covered with a layer of dust and debris. The restorations from the past are apparent and there are several areas where the fabric is detached. The entire tapestry has been lined with large stripes of medieval fabric.

Presently the Tapestry Restoration Laboratory is performing a very detailed study on the entire tapestry, in order to determine the best restoration technique that will be applied to this wonderful piece of art. Scientific and Chemical analysis will follow as a second step of the restoration. The restorers are also completing a graphic design which will be used as a map. This map will indicate different areas with different problems or restoration, thus to be treated in different ways.

The preliminary photographic campaign has been completed as well.



damage of the weft



Example of past restoration



View of the restoration performed in the past: above fabric section and below painted section