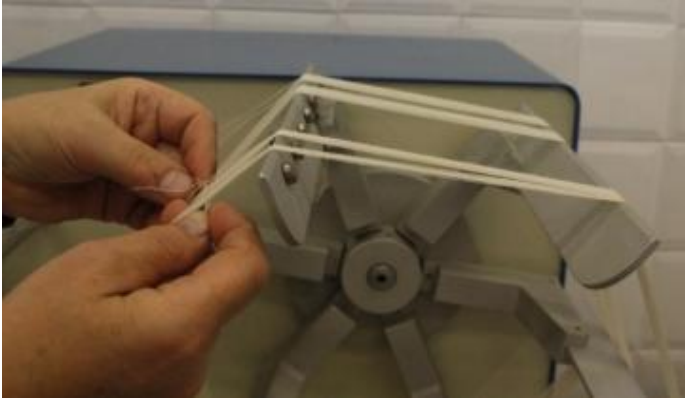


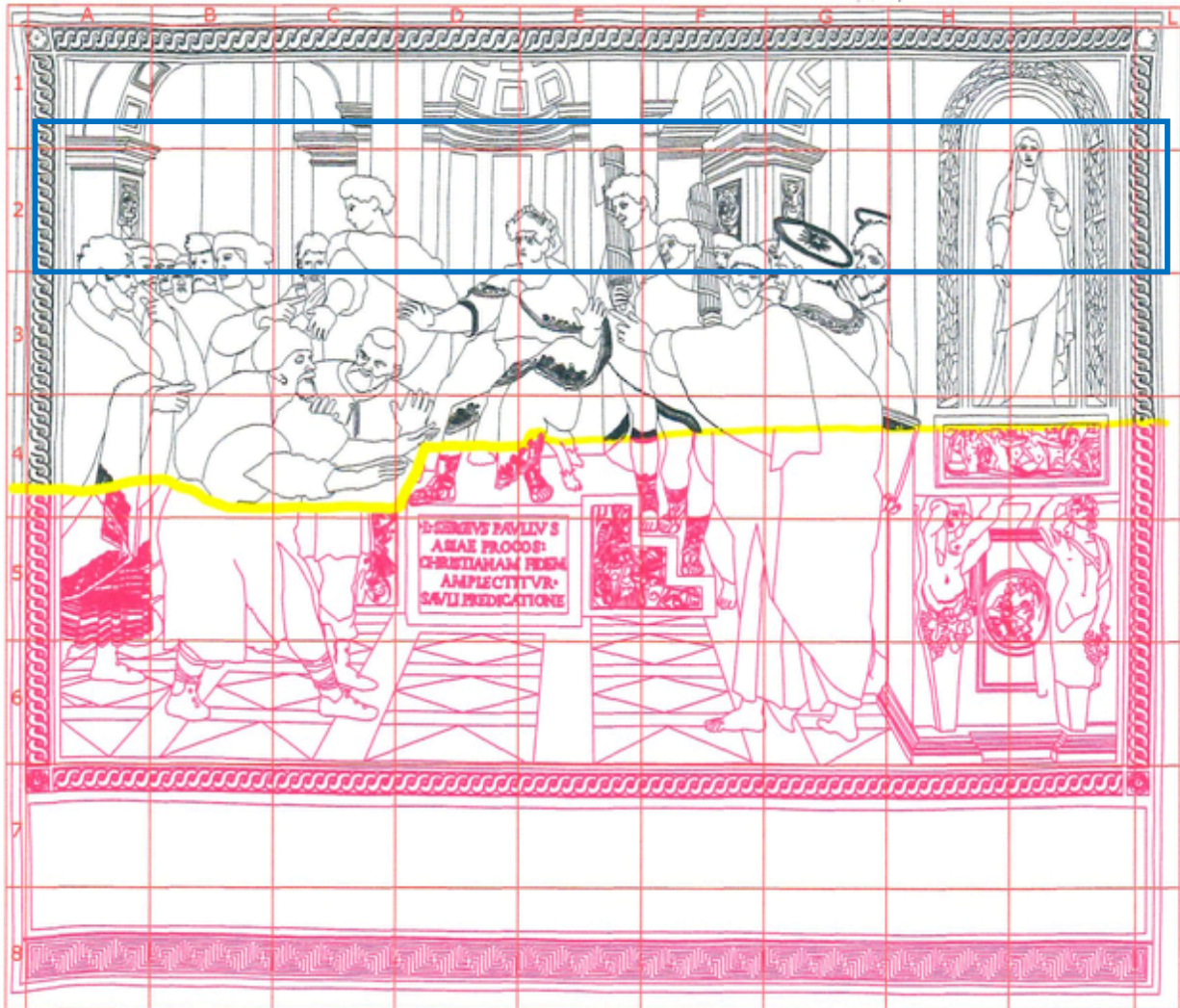
Once the proper colors were identified, the dyeing of the fabrics was carried out in an amount suitable for the needs of the work.

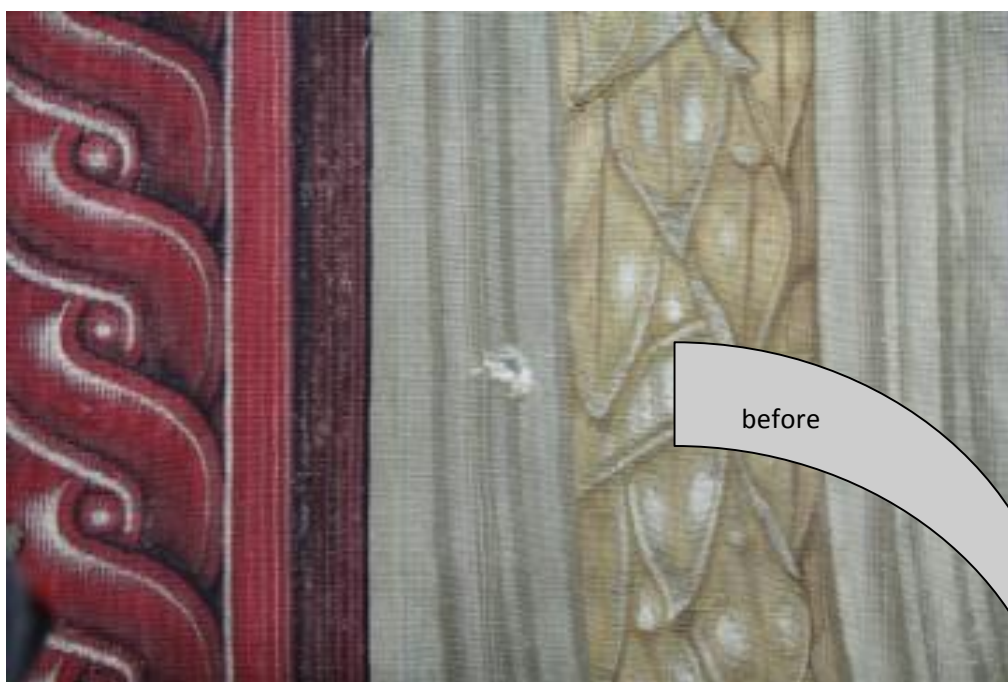


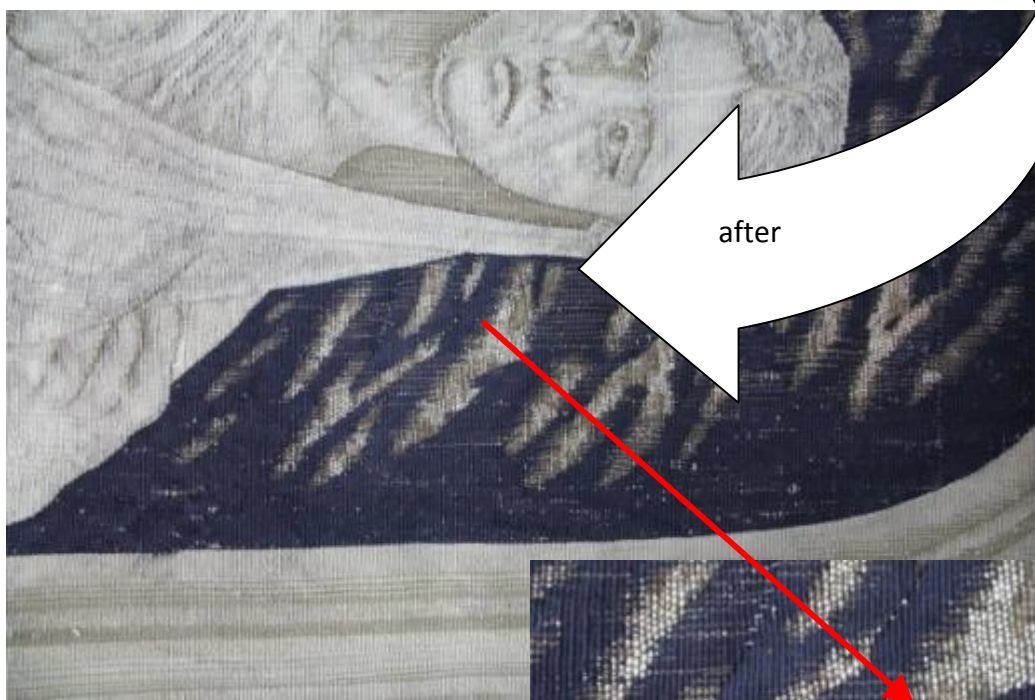
The dyeing of silk and wool yarns continued, following a specific procedure: the yarn is made into a bundle, dyed according to previously studied formulas, then unraveled and put in the bobbin once dyed.

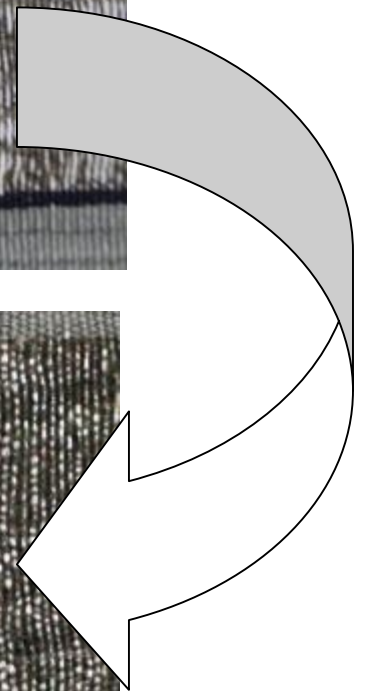
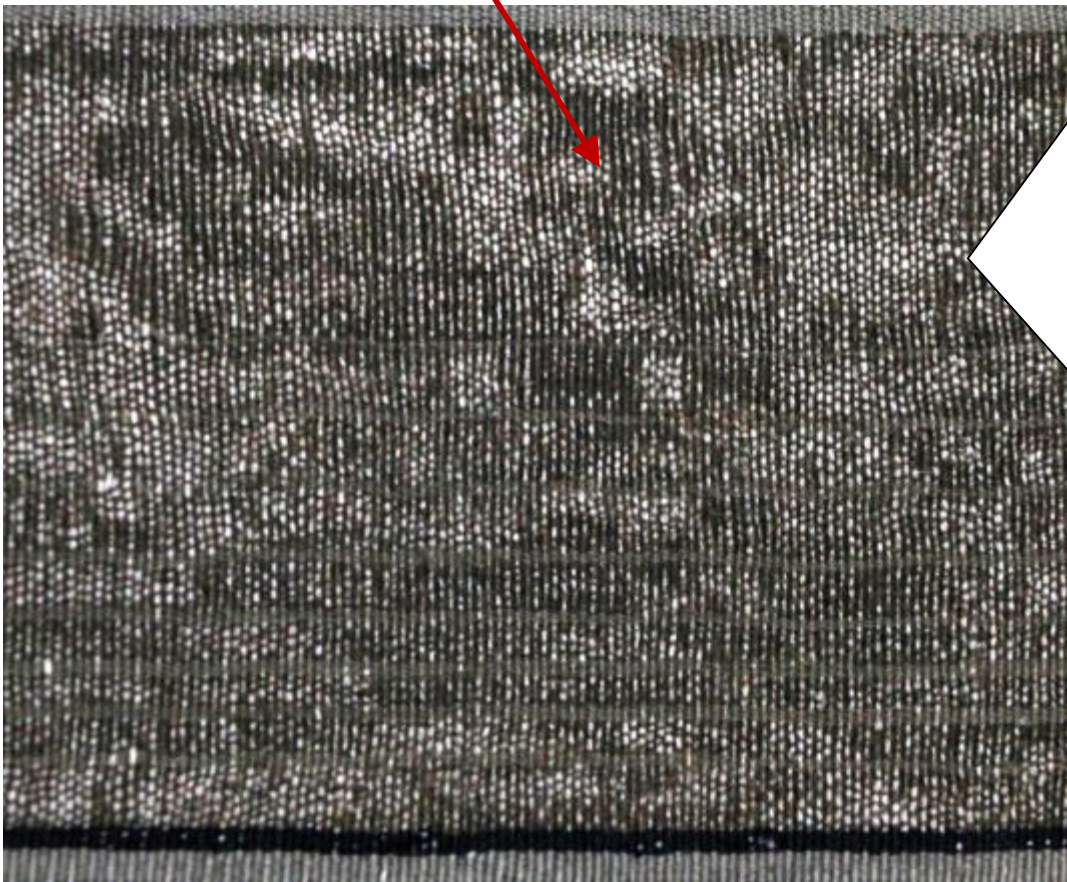
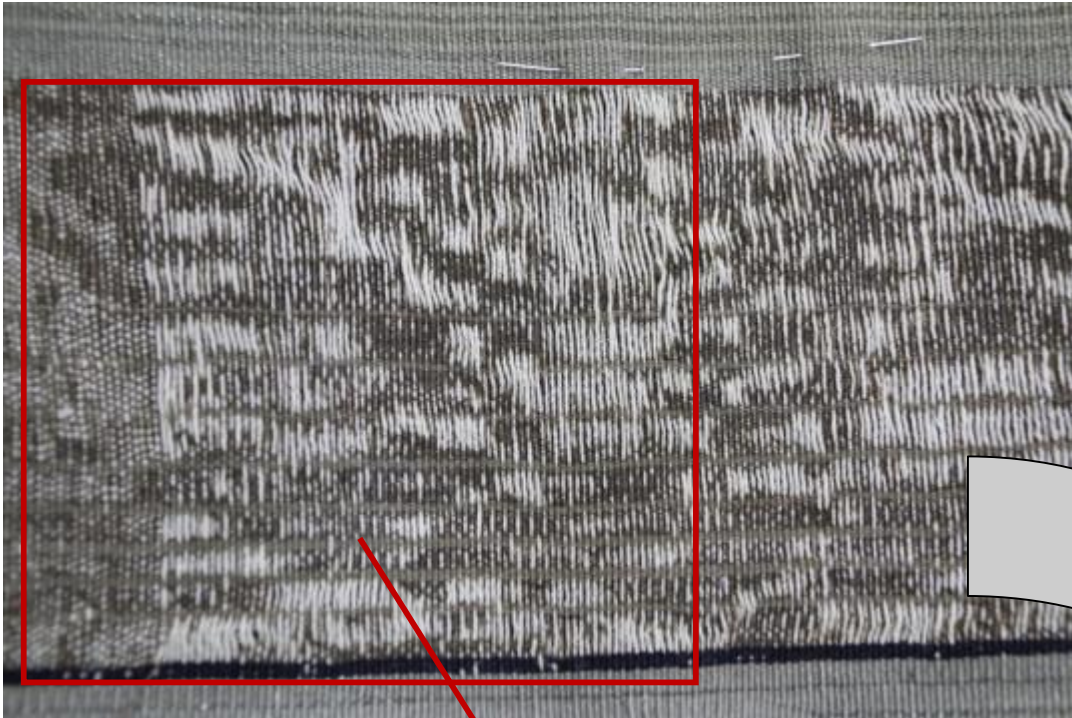


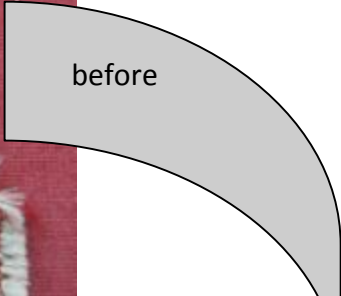
The positioning of the linen supports in the A-L / 2 area on the back of the tapestry continued (see attached chart), extending the "alternate sewing" stitching of the original warps made with wool or silk yarns.



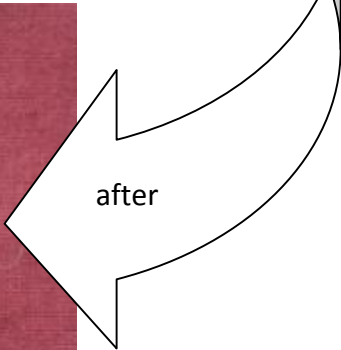








before



after